

RZ23I03: Site Photos

Site Visit September 21, 2023

Area Proposed for Rezoning



Figure 1 Berm at the NW end of the property



Figure 2 Existing driveway, to be used as main access for extended business



Figure 3 Looking north across Youbou Road



Figure 4 Looking southwest across the fence into the tree farm

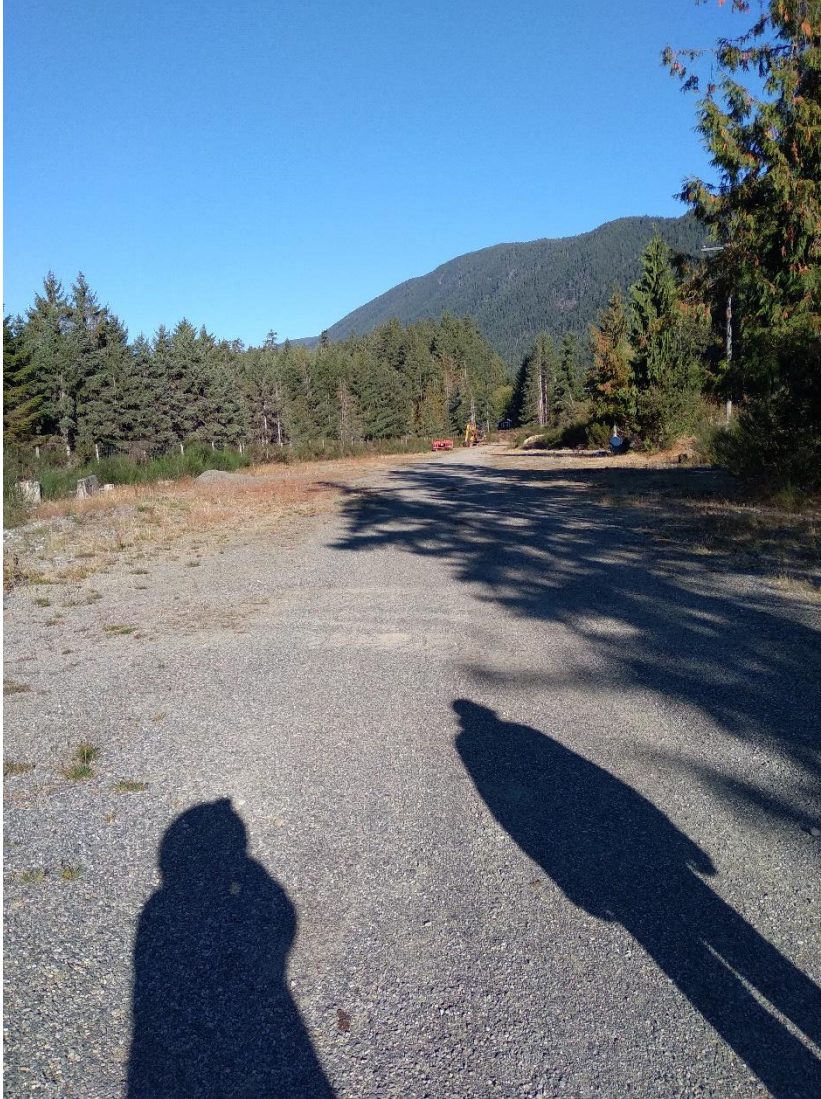


Figure 5 Looking northwest from the gate to the area proposed for rezoning



Figure 6 Looking south east towards the gate, from the berm at the northwest end of the property



Figure 7 Existing shed on skids, on the new area, adjacent to the gate and the storage on the existing I-4 zoned portion



Figure 8 Photo showing water tank for fire suppression

Existing Business Photos



Figure 9 Showing visual screening (cedar hedge), photo taken from the road



Figure 10 Existing business, taken from new area



Figure 11 Close up of existing sign



Figure 12 Sign in context along Youbou Road, looking east