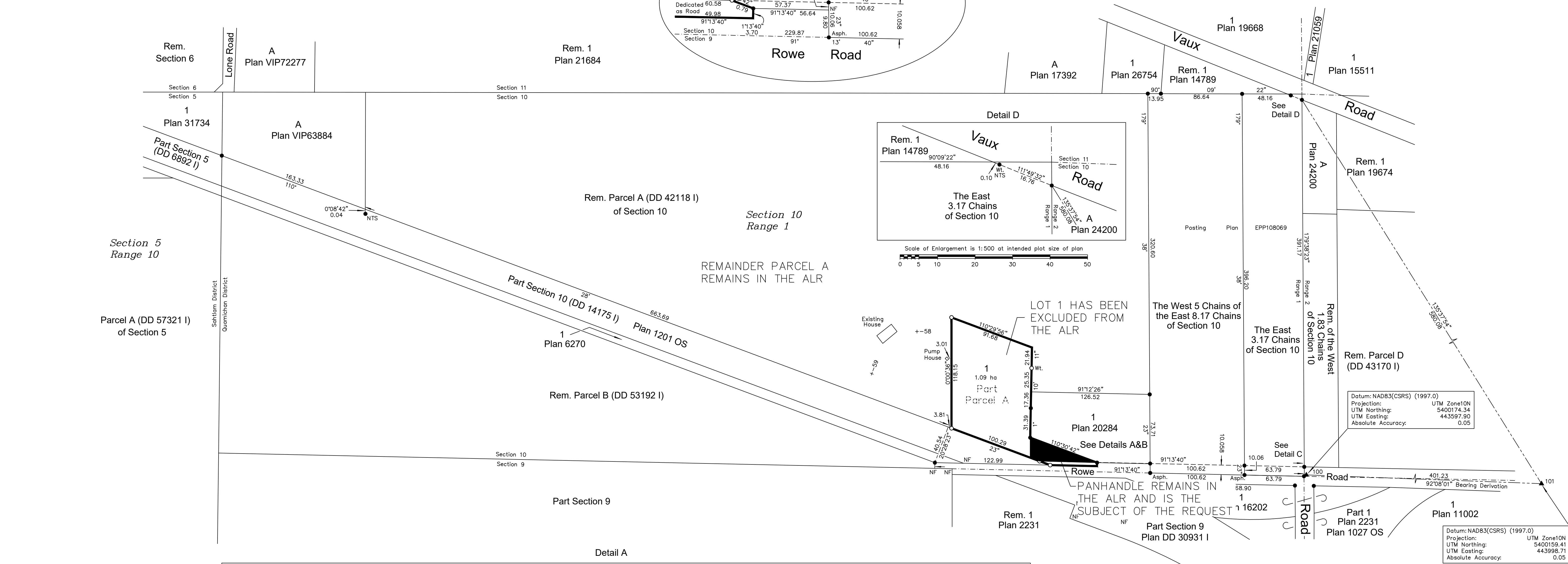
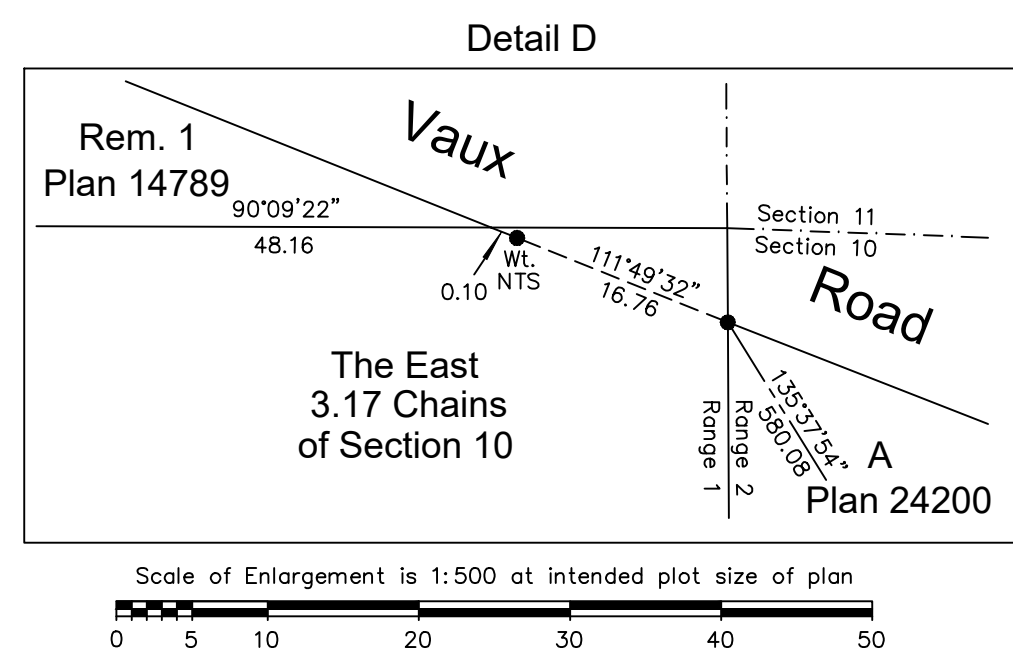
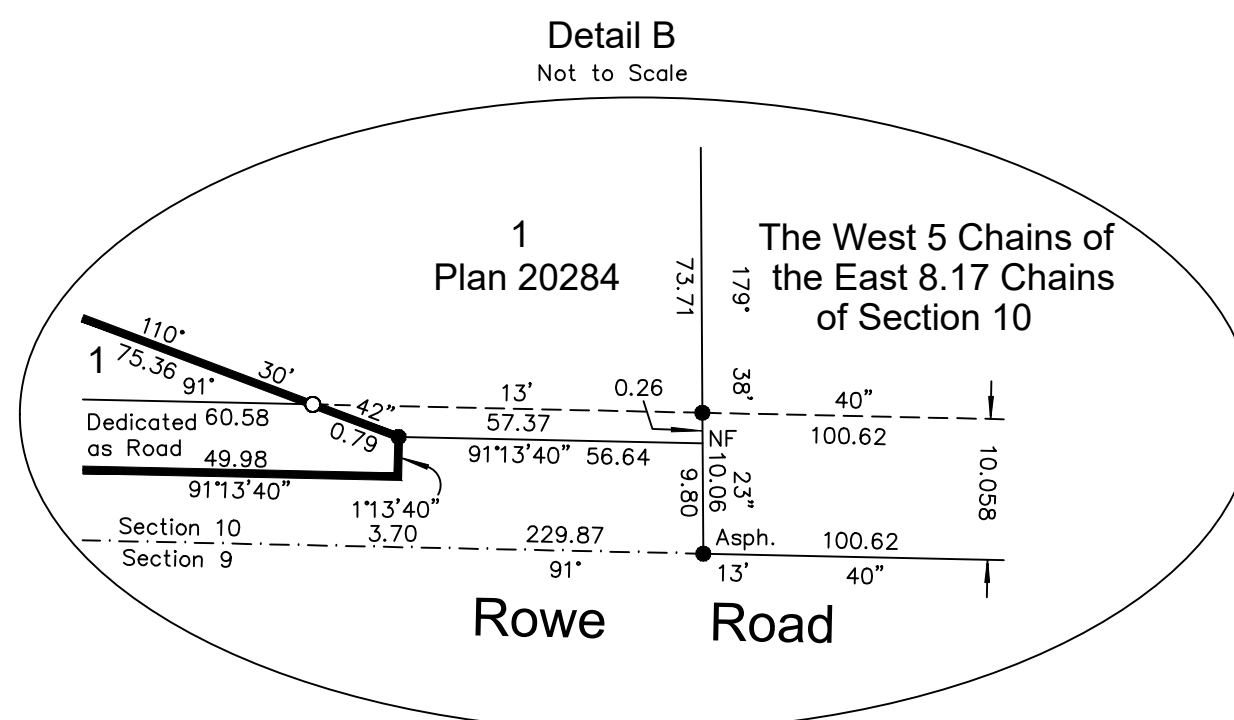


PLAN EPP111010

## Attachment B



The intended plot size of this plan is 864mm in width by 560mm in height (D size) when plotted at a scale of 1:2000.



Found	Placed
-------	--------

Found	Placed
-------	--------

● ○ Standard Iron Post  
 ▲ Traverse Hub

Asph. denotes Iron Post set in Asphalt

NTS denotes Not to Scale

All distances are in metres and decimals thereof

Grid bearings are derived from differential dual frequency

GNSS observations and are referred to the central meridian of UTM Zone 10.

The UTM coordinate and estimated absolute accuracy (m)

The UTM coordinates and estimated absolute accuracy achieved are derived from the Precise Point Positioning (PPP) service.

Natural Resources Canada

This plan shows horizontal ground level distances, unless otherwise noted.

specified. To compute grid distances, multiply ground level by the average combined factor of 0.9996273. The average

combined factor has been determined based on an ellipsoid elevation of 73.48 metres.

elevation of 75.48 metres.

This plan shows one or more witness posts which are not set on the true corner(s).

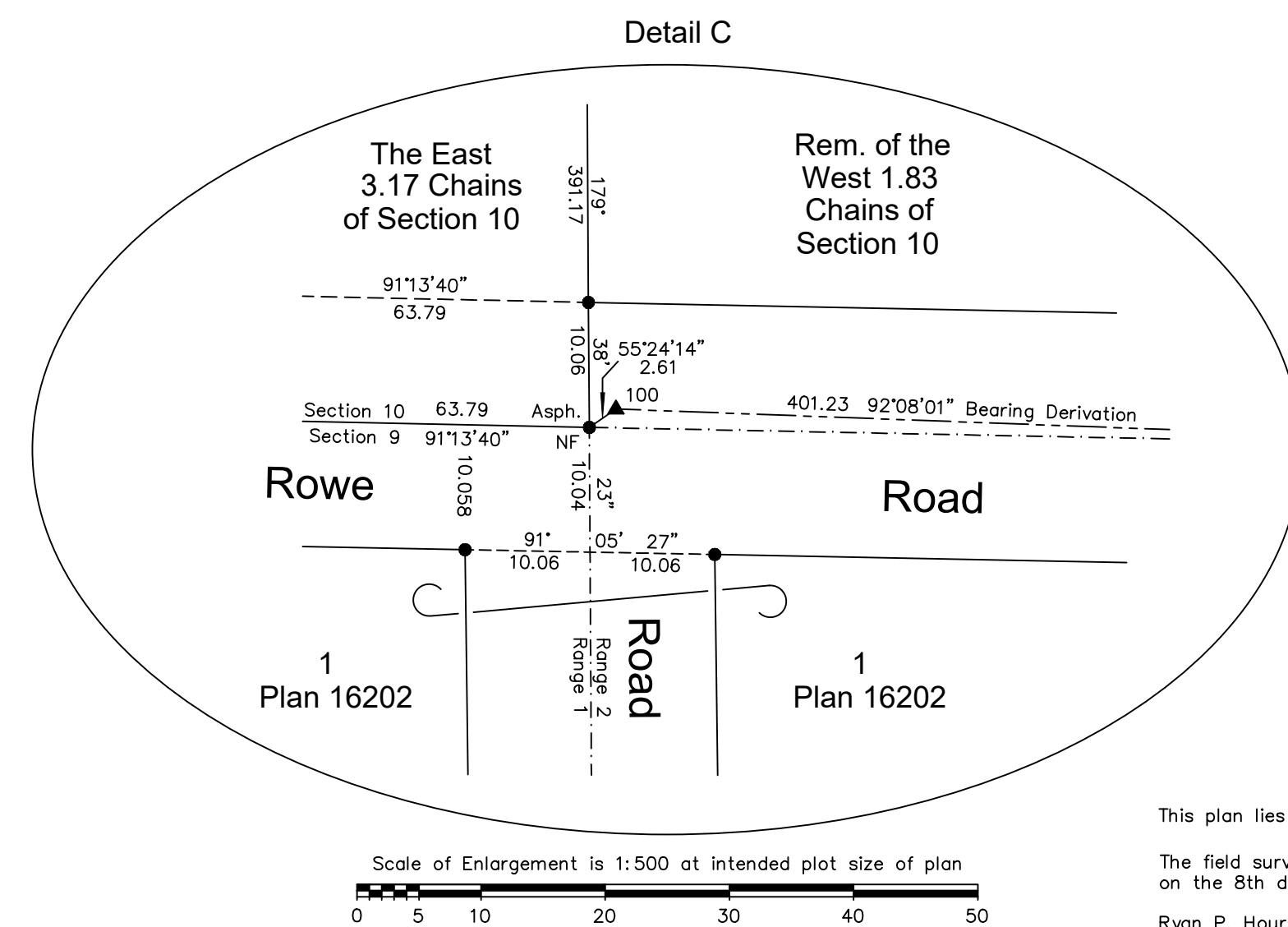
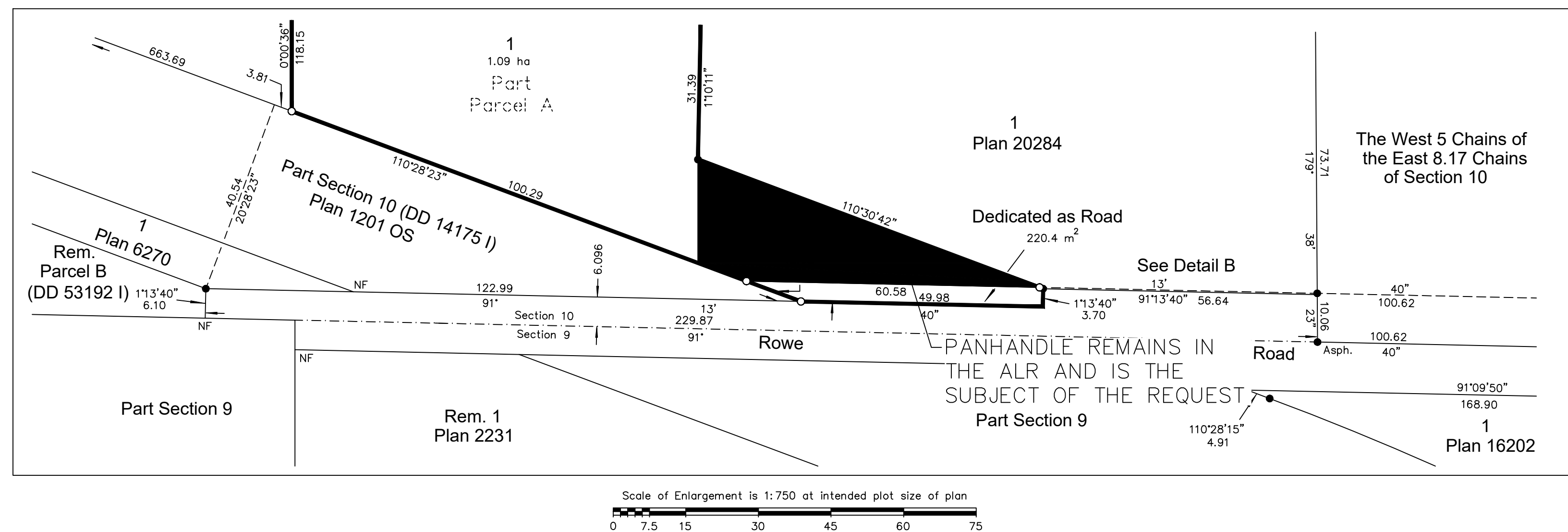
This subdivision lies partially within the Agricultural Land Re-

This subdivision lies partially within the Agricultural Land Re-

This plan lies within the jurisdiction of the Approving Officer for the Ministry of

Approving Officer for the Ministry of  
Transportation and Infrastructure

File No. 2016-04091



This plan lies within the Cowichan Valley Regional District

The field survey represented by this plan was completed on the 8th day of April, 2021.

Ryan P. Hourston, BCLS 887